

M550CH

Lifting Capacity

- Maximum Lift: 50,000 lb (22,680 kg)*
- Maximum Load: 42,500 lb (19,278 kg)*
- Maximum Working Load: 30,000 lb (13,608 kg)*
- *@ 4 ft overhang

Boom and Blocks

- Standard Boom: 20 ft (6.1 m)
- Boom Line Parts: 3
- Load Line Parts: 3
- Typical Hook Speed (HI/LOW): 45/23 ft/min (13.7/7 m/min)

Hydraulic System

- Directional Control Valve: 3-Section, Load Sense, Pressure Compensated w/ Pilot Controls
- Maximum Operating Pressure: 3,000 psi (207 bar)
- Maximum Allowable Flow: 45 gpm (170 l/min)

Winches

Boom Winch

- Planetary, single-speed, dual brake system
- Wire rope installed: 150 ft (45.7 m)
- Max. cable capacity: 368 ft (112 m)
- Wire Rope Diameter: 5/8 in (16 mm)*

Load Winch

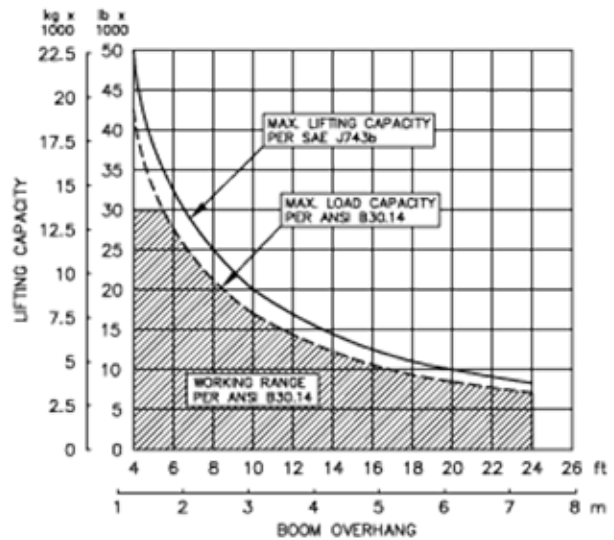
- Planetary, two-speed, dual brake system
- Wire rope installed: 150 ft (45.7 m)
- Max. cable capacity: 368 ft (112 m)
- Wire Rope Diameter: 5/8 in (16 mm)*
- * Maximum breaking strength: 41,200 lb (18,688 kg)

Weights

- Removable counterweight segments: 9 @ 420 lb (190 kg)
- Total extendible counterweight (segments and frames): 4,850 lb (2,200 kg)
- Total sideboom attachment weight: 11,900 lb (5,398 kg)



M550CH Hydraulic Sideboom Attachment



SPECIFIED EQUIPMENT:

- 5/8" (16 mm) WIRE ROPE [41,200 lb (18,688 kg) MIN. BREAKING STRENGTH]
- 3 PART LOAD LINE, 3 PART BOOM LINE
- 20 ft (6.1 m) BOOM (STANDARD), 24 ft (7.3 m) BOOM (OPTIONAL)
- 15 ton (13.6 metric ton) WLL HOOK BLOCK
- 4,850 lb (2,200 kg) COUNTERWEIGHT (EXTENDED)

M550CH**Features**

- Tubular A-Frame boom engineered for exceptional support at maximum lift capacity and easy detachment.
- Three-lever hydraulic control system allows simultaneous control of load and boom functions. The controls are easy to operate and require minimal operator training.
- Hydraulic boom stop automatically prevents system over travel and damage to boom.
- System employs tractor's existing hydraulic pump, filter and reservoir for convenience of replacement parts and maintenance.
- Sideboom features quick release hinge pins for easy boom removal and maintenance
- Hydraulic oil cooler.
- Optional multi-axis, hydraulic joystick control.
- Optional remote hydraulic pilot controls.

Tractor Models

- Caterpillar D6M XL
- Caterpillar D6M LGP
- Caterpillar D6N XL
- Caterpillar D6N LGP

Midwestern's sidebooms are manufactured, installed, and tested to meet the requirements outlined in ASME B30.14-2010 for sideboom tractors. Capacity ratings are tested and rated per specifications and procedures outlined in ISO 8813-1992 for lift capacities of side boom tractors. All Midwestern structural welding complies with the American Welding Society (AWS) Code Welding Earthmoving, Construction, and Agricultural Equipment D14.3/D14.3M:2010.

Notes